



A STEP AHEAD  
FOR FOOT SURGERY



 **LSMMed**



# INTRODU

## INTRODUCTION

Minimally Invasive Foot Surgery offers a selection of percutaneous foot surgery techniques using specific burrs.

Accurate preparation of the osteotomies is achieved under x-ray guidance with the burrs set at low speed/ high torque on a burr machine.

Osteotomies are fixed into the correct position using specific screws if required.

Amongst the benefits to the patient that MIFS techniques offer there are: less soft tissue damage, reduced swelling, less scarring and fast functional recovery.

# THE SURGERIES

## **MIFS - CALCANEAL OSTEOTOMY**

Medial/lateral shift of the calcaneus which is fixed with screws of surgeon's preference (4.5, 6.5 or 8 mm double threaded or 7.2 mm cannulated partial threaded screw).

## **MIFS - BASAL OSTEOTOMY**

Proximal closing wedge osteotomy of the first metatarsal that permits large angular correction fixed with two double threaded screws.

## **MIFS - CHEVRON OSTEOTOMY**

For mild to moderate hallux valgus. It provides lateral displacement and realignment of the metatarsal which is then fixed with two double threaded screws.

## **MIFS - AKIN OSTEOTOMY**

A closing wedge osteotomy of the hallux, fixed with one double threaded screw if required.



# THE SURGE

## **MIFS - DMMO**

Extra articular osteotomy allowing decompression of the joint. Fixation is not required; the maintenance of the capsule and the surrounding structures is a natural restraint to the osteotomized fragments which, under load action, assume an ideal positioning, thus realigning the metatarsals.

## **MIFS - CHEILECTOMY**

Dorsal or lateral osteophytes are shaved using a wedge burr to a bony paste which is removed with palpation, irrigation and specific instrumentation (rasp).

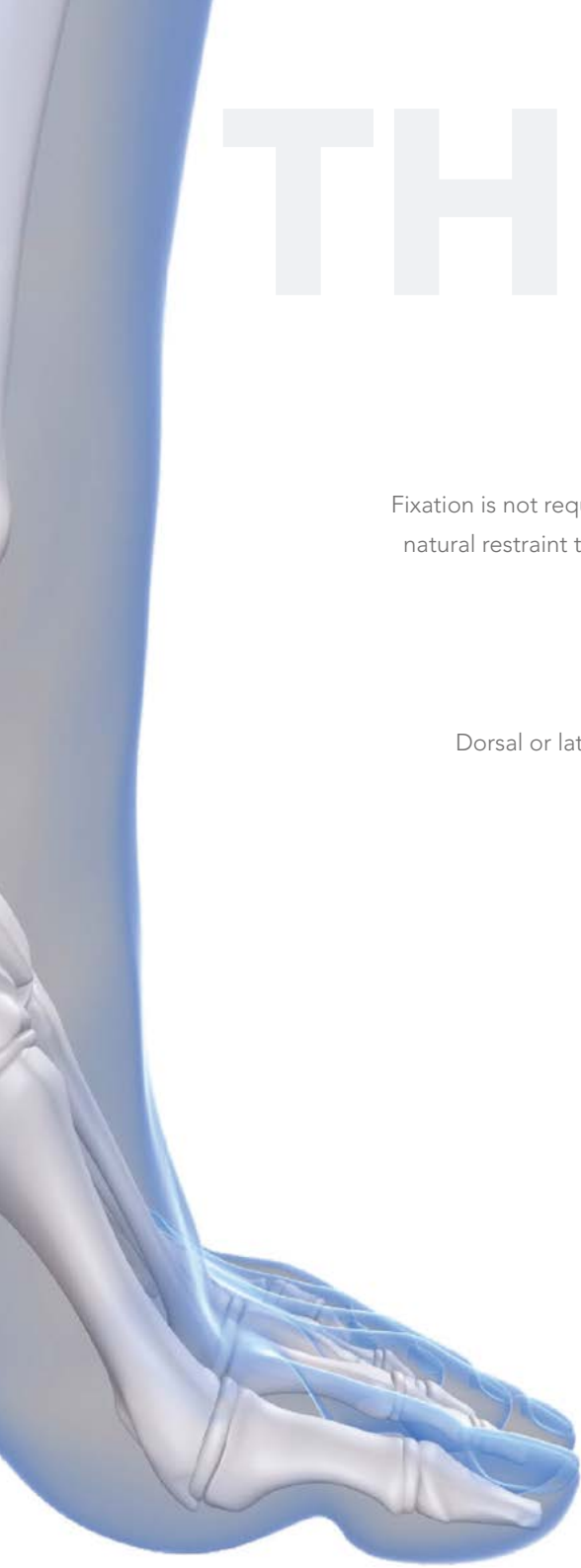
5

## **MIFS - BUMPECTOMY**

Osteophytic growths and bone spurs removed using a wedge burr.

## **MIFS - BUNIONETTE**

Percutaneous correction of the 5<sup>th</sup> metatarsus which comprises exostosis and osteotomy of metatarsal head.



## DOUBLE THREADED SCREWS

Total thread	Partial thread	
HMV 541-10ST	-	10 mm
HMV 541-12ST	HMV 542-12ST	12 mm
HMV 541-14ST	HMV 542-14ST	14 mm
HMV 541-16ST	HMV 542-16ST	16 mm
HMV 541-18ST	HMV 542-18ST	18 mm
HMV 541-20ST	HMV 542-20ST	20 mm
HMV 541-22ST	HMV 542-22ST	22 mm
HMV 541-24ST	HMV 542-24ST	24 mm
HMV 541-26ST	HMV 542-26ST	26 mm
HMV 541-28ST	HMV 542-28ST	28 mm
HMV 541-30ST	HMV 542-30ST	30 mm
HMV 541-32ST	HMV 542-32ST	32 mm
HMV 541-34ST	HMV 542-34ST	34 mm

6

## CANNULATED DRILLS AND GUIDE WIRES

LHV039-1	Guide wire Ø 1 X 100 mm (monouso)
LHV040-1	Reduction wire Ø 2 X 200 mm (monouso)
LHV035L	Distal cannulated drill bit Ø 2 mm (single use)
LMI008L	Proximal cannulated drill bit Ø 3,2 mm (single use)

## BURRS

LMI001-1	Shannon burr Ø 2,2 x 20 mm
LMI002-1	Shannon burr Ø 2,2 x 12 mm
LMI003-1	Shannon burr Ø 2,2 x 8 mm
LMI004-1	Wedge burr Ø 2,9 x 13 mm
LMI005-1	Wedge burr Ø 4,3 x 13 mm
LMI007-1	Shannon burr Ø 3 x 20 mm

## INSTRUMENTS

LMI100	Instrument set composed of (reusable):
MFS 090000	Box
LMI 006-001	Blade handle
LMI 006-002	Curved elevator
LMI 006-003	Straight elevator
LMI 006-004	Rasp
LMI 006-006	Measuring device
LNSWG0007	Cannulated screwdriver hex. 2 mm
5904*	Beaver blade (set 25 pcs)

\* Not included in the kit, to be ordered separately.

## EQUIPMENT

WGY1001207	Burr machine
SGS-ES	Straight handle
WG1000	Carry case for burr machine
SG70M	Motor cord
NK0045002	Single use irrigation kit

# IMPLANTS

## IMPLANTS & INSTRUMENTS



### BURRS

Designed to create small, and accurate osteotomies. The burrs are sterile, single use to ensure precision cutting edges.

### SCREWS

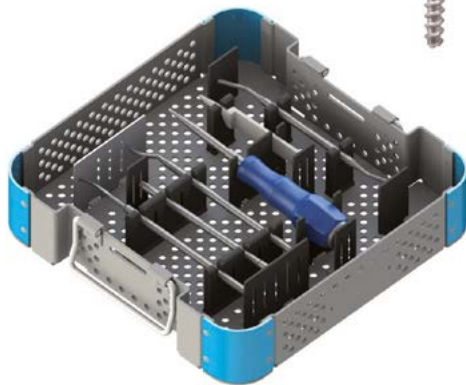
The screws have been designed to guarantee the best endurance and are double threaded, in sterile single packaging

7



### INSTRUMENTS

A single specific tray of simple use developed to enhance all MIFS techniques.



### BURR CONSOLE

Low speed and high torque settings in combination with.



### **LSM-Med Srl**

Strada Borrana 38  
47899 Serravalle  
Repubblica di San Marino  
t: + 378 0549 961911  
f: + 378 0549 961912  
[www.lsm-med.com](http://www.lsm-med.com)  
[info@lsm-med.com](mailto:info@lsm-med.com)



### **OVERMED Srl**

Via Larga 13  
20122 Milano  
Italia  
[www.overmed.eu](http://www.overmed.eu)  
[info@overmed.eu](mailto:info@overmed.eu)